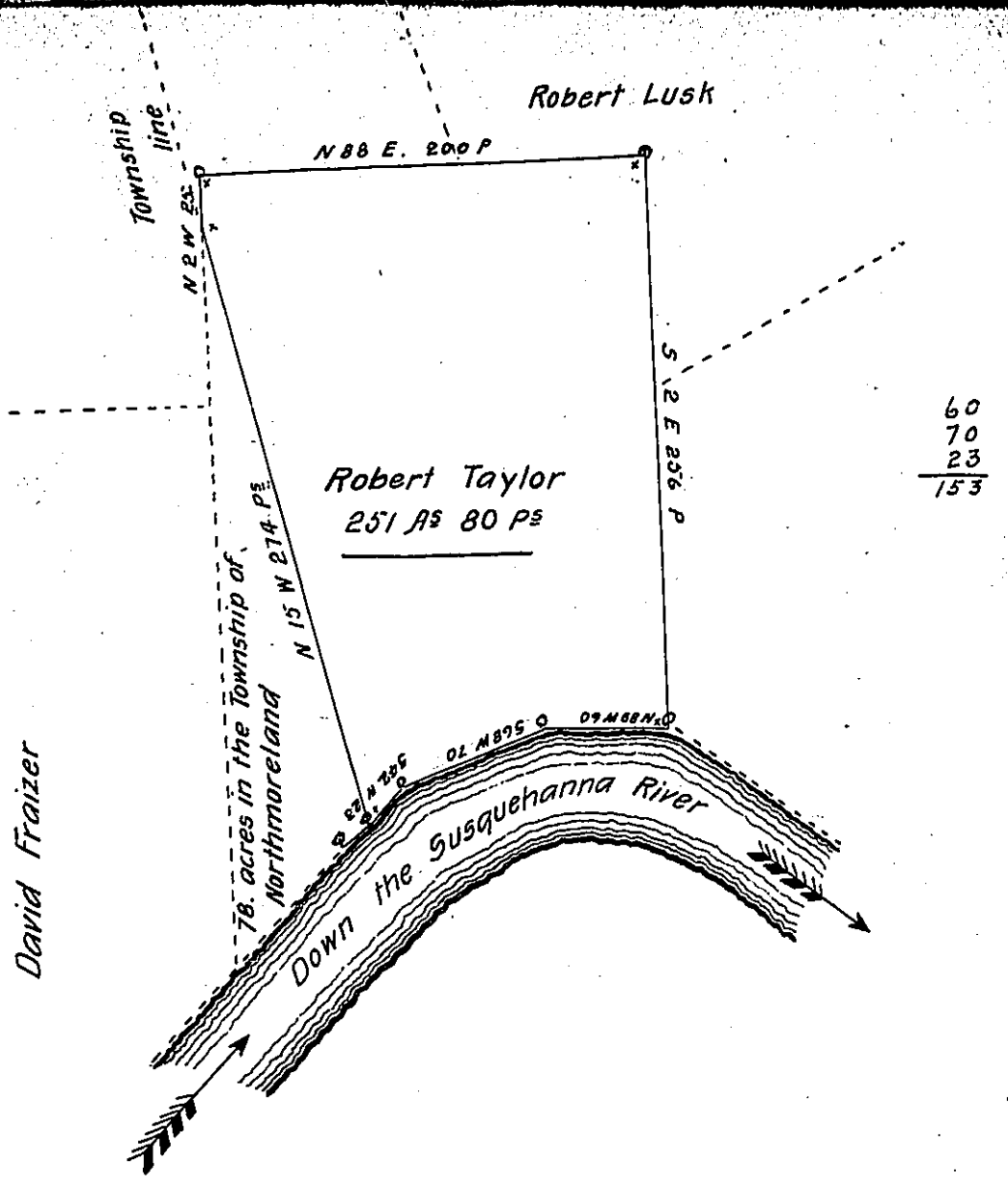


Scale 100 perches to the inch



A Draught of a tract of land, call'd "Squires Point" Situate on the East Side of the N. E. branch of Susquehanna river about half a mile above the mouth of buttermilk falls creek in the County of Luzerne, containing two hundred and fifty one acres, and eighty perches and the usual allowance of six per cent for roads, being the greater part of a larger tract of three hundred and twenty nine acres and allowance &c. which was surveyed the 5<sup>th</sup> day of October 1769 for Robert Taylor in Pursuance of an Order dated the 3<sup>rd</sup> day of April, number 2316, Resurveyed and divided off the 5<sup>th</sup> day of September 1803. by order of the Comissioners appointed for putting in execution an act entitled an act offering compensation to the Pennsylvania claimants of certain lands in the Serenteen Townships in the County of Luzerne &c." passed the 4<sup>th</sup> day of April 1799" And certified the 30<sup>th</sup> day of June 1807.

By

Geo. Haines D. S.

To Samuel Cochran Esquire.  
Surveyor General.

IN TESTIMONY that the above is a copy of the original remaining on file in the Department of Internal Affairs of Pennsylvania, made conformably to an Act of Assembly approved the 16th day of February, 1833, I have hereunto set my Hand and caused the Seal of said Department to be affixed at Harrisburg, this fifteenth day of September 1904.

*Isaac R. Pearson*  
Secretary of Internal Affairs.